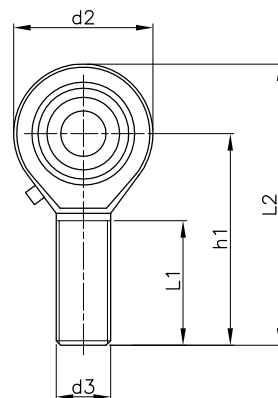
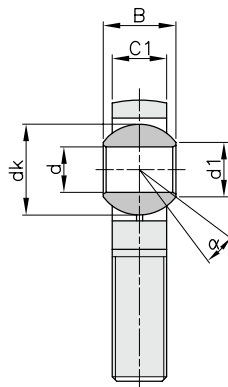






TESTE A SNODO DIN 648 - LUBRIFICABILI

ROD ENDS DIN 648 - WITH LUBRICATION



Materiale:

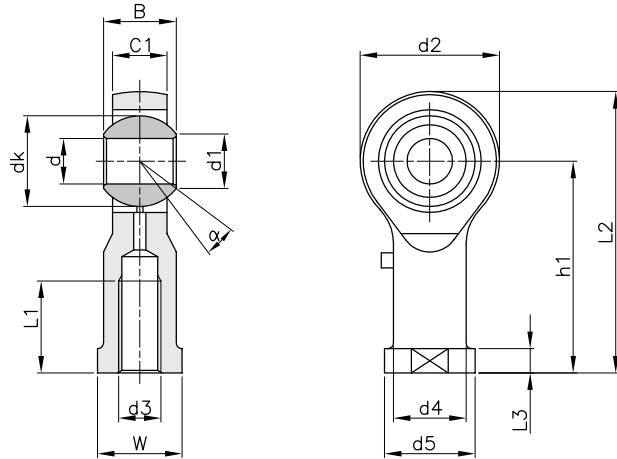
- Gambo: acciaio zincato
- Inserto: bronzo autolubrificante
- Anello interno: acciaio temprato, rettificato e lappato

tipo	codice		d	d3	B	C1	L1	d2	L2	h1	d1	dk	α°	carico		Kg.
	filettatura destra	filettatura sinistra												dinamico C KN	statico C_0 KN	
B-JAM 5	BJAM05R	BJAM05L	5	M5 x 0,8	8	6,0	20	18	42	33	7,7	11,1	13	3,3	3,1	0,013
B-JAM 6	BJAM06R	BJAM06L	6	M6 x 1	9	6,8	23	20	46	36	8,9	12,7	13	4,3	4,4	0,020
B-JAM 8	BJAM08R	BJAM08L	8	M8 x 1,25	12	9,0	25	24	54	42	10,3	15,9	14	7,2	8,0	0,030
B-JAM 10	BJAM10R	BJAM10L	10	M10 x 1,5	14	10,5	30	26	61	48	12,9	19,1	13	10,0	12,9	0,055
B-JAM 12	BJAM12R	BJAM12L	12	M12 x 1,75	16	12,0	34	30	69	54	15,4	22,2	13	13,4	17,0	0,085
B-JAM 14	BJAM14R	BJAM14L	14	M14 x 2	19	13,5	37	34	77	60	16,8	25,4	16	17,0	24,0	0,140
B-JAM 16	BJAM16R	BJAM16L	16	M16 x 2	21	15,0	41	40	86	66	19,3	28,6	15	21,6	28,5	0,210
B-JAM 18	BJAM18R	BJAM18L	18	M18 x 1,5	23	16,5	41	44	94	72	21,8	31,8	15	26,0	42,5	0,280
B-JAM 20	BJAM20R	BJAM20L	20	M20 x 1,5	25	18,0	45	48	102	78	24,3	34,9	14	31,5	42,5	0,380
B-JAM 22	BJAM22R	BJAM22L	22	M22 x 1,5	28	20,0	48	54	111	84	25,8	38,1	15	38,0	57,0	0,480
B-JAM 25	BJAM25R	BJAM25L	25	M24 x 2	31	22,0	55	60	124	94	29,5	42,9	15	47,5	68,0	0,640
B-JAM 28	BJAM28R	BJAM28L	28	M27 x 2	35	24,0	62	66	136	103	33,7	47,6	15	55,0	75,5	0,960
B-JAM 30	BJAM30R	BJAM30L	30	M30 x 2	37	25,0	66	70	145	110	34,8	50,8	17	64,0	88,0	1,100



TESTE A SNODO DIN 648 - LUBRIFICABILI

ROD ENDS DIN 648 - WITH LUBRICATION



Materiale:

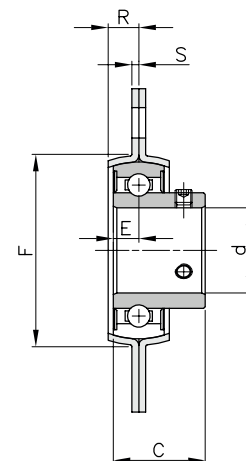
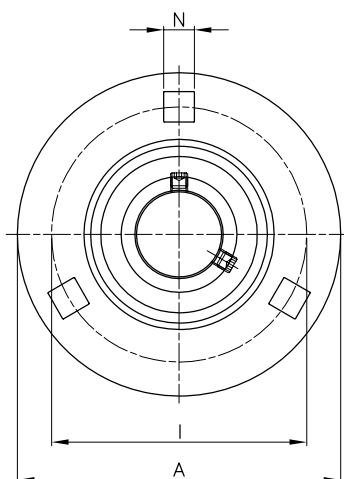
- Gambo: acciaio zincato
- Inserto: bronzo autolubrificante
- Anello interno: acciaio temprato, rettificato e lappato

tipo	codice		d	d3	B	C1	L1	d2	L2	h1	L3	d4	d5	W	d1	dk	α°	carico		Kg.
	filettatura destra	filettatura sinistra																din.C KN	st.C ₀ KN	
B-JAF 5	BJAF05R	BJAF05L	5	M5 x 0,8	8	6,0	14	18	36	27	4,0	8,5	12	9	7,7	11,1	13	3,3	5,7	0,016
B-JAF 6	BJAF06R	BJAF06L	6	M6 x 1	9	6,8	14	20	40	30	5,0	10,0	13	11	8,9	12,7	13	4,3	7,2	0,022
B-JAF 8	BJAF08R	BJAF08L	8	M8 x 1,25	12	9,0	17	24	48	36	5,0	12,5	16	14	10,3	15,9	14	7,2	11,6	0,047
B-JAF 10	BJAF10R	BJAF10L	10	M10 x 1,5	14	10,5	21	26	56	43	6,5	15,0	19	17	12,9	19,1	13	10,0	14,5	0,077
B-JAF 12	BJAF12R	BJAF12L	12	M12 x 1,75	16	12,0	24	30	65	50	6,5	17,5	22	19	15,4	22,2	13	13,4	17,0	0,100
B-JAF 14	BJAF14R	BJAF14L	14	M14 x 2	19	13,5	27	34	74	57	8,0	20,0	26	22	16,8	25,4	16	17,0	24,0	0,160
B-JAF 16	BJAF16R	BJAF16L	16	M16 x 2	21	15,0	33	40	84	64	8,0	22,0	28	24	19,3	28,6	15	21,6	28,5	0,220
B-JAF 18	BJAF18R	BJAF18L	18	M18 x 1,5	23	16,5	36	44	93	71	10,0	25,0	31	27	21,8	31,7	15	26,0	42,5	0,320
B-JAF 20	BJAF20R	BJAF20L	20	M20 x 1,5	25	18,0	40	48	101	77	10,0	27,5	35	30	24,3	35,0	14	31,5	42,5	0,420
B-JAF 22	BJAF22R	BJAF22L	22	M22 x 1,5	28	20,0	43	54	111	84	12,0	30,0	38	32	25,8	38,1	15	38,0	57,0	0,540
B-JAF 25	BJAF25R	BJAF25L	25	M24 x 2	31	22,0	48	60	124	94	12,0	33,5	42	36	29,5	42,9	15	47,5	68,0	0,720
B-JAF 28	BJAF28R	BJAF28L	28	M27 x 2	35	24,0	53	66	136	103	14,0	37,0	46	41	33,7	47,6	15	55,0	75,0	0,820
B-JAF 30	BJAF30R	BJAF30L	30	M30 x 2	37	25,0	56	70	145	110	15,0	40,0	50	46	34,8	50,8	17	64,0	88,0	1,100



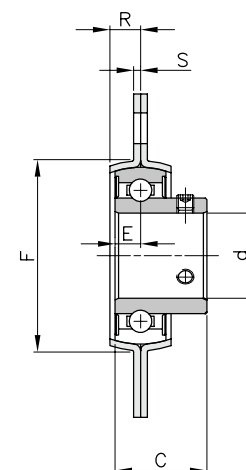
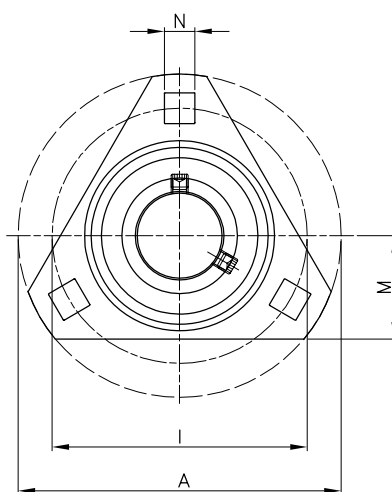
SUPPORTI PER CUSCINETTI IN LAMIERA - ZINCATI BALL FLANGE BEARING IN STEEL - ZINC PLATED

SUPPORTI IN LAMIERA "B-SBPF"



tipo	codice	d mm	dimensioni (mm)								Kg.
			A	I	F	R	N	S	C	E	
B-SBPF201	BSBPF201	12	81	63,5	49	7,0	7,0	2,0	22	6,0	0,27
B-SBPF202	BSBPF202	15	81	63,5	49	7,0	7,0	2,0	22	6,0	0,27
B-SBPF203	BSBPF203	17	81	63,5	49	7,0	7,0	2,0	22	6,0	0,27
B-SBPF204	BSBPF204	20	90	71,5	56	8,0	8,0	2,0	25	7,0	0,33
B-SBPF205	BSBPF205	25	95	76,0	60	9,0	9,0	2,0	27	7,5	0,38
B-SBPF206	BSBPF206	30	113	90,5	71	9,5	10,0	2,6	30	8,0	0,62
B-SBPF207	BSBPF207	35	123	100,0	81	11,0	10,5	2,6	32	8,5	0,82
B-SBPF208	BSBPF208	40	148	119,0	90	11,0	13,5	3,4	34	9,0	1,10

SUPPORTI IN LAMIERA "B-SBPF D"



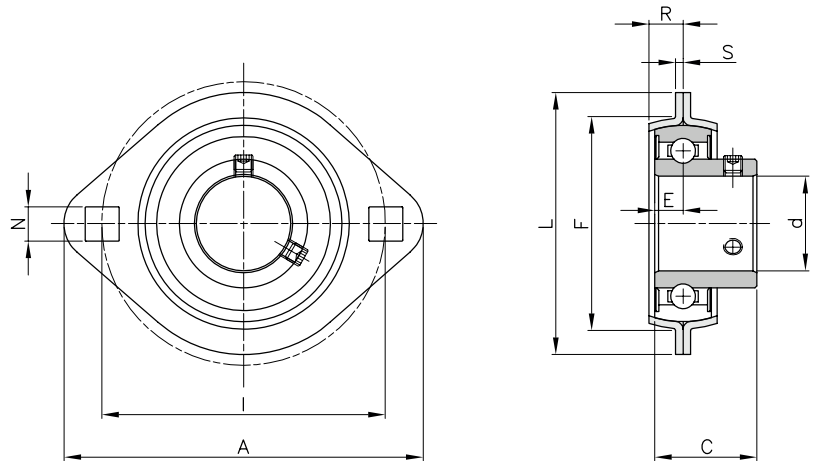
tipo	codice	d mm	dimensioni (mm)									Kg.
			A	I	M	F	R	N	S	C	E	
B-SBPF D201	BSBPF D201	12	81	63,5	29	49	7,0	7,1	2,0	22	6,0	0,23
B-SBPF D202	BSBPF D202	15	81	63,5	29	49	7,0	7,1	2,0	22	6,0	0,23
B-SBPF D203	BSBPF D203	17	81	63,5	29	49	7,0	7,1	2,0	22	6,0	0,23
B-SBPF D204	BSBPF D204	20	90	71,5	33	56	8,0	9,0	2,0	25	7,0	0,28
B-SBPF D205	BSBPF D205	25	95	76,0	35	60	9,0	9,0	2,0	27	7,5	0,36
B-SBPF D206	BSBPF D206	30	113	90,5	38	71	9,5	11,0	2,6	30	8,0	0,55
B-SBPF D207	BSBPF D207	35	122	100,0	45	81	11,0	11,0	2,6	32	8,5	0,74



SUPPORTI PER CUSCINETTI IN LAMIERA - ZINCATI

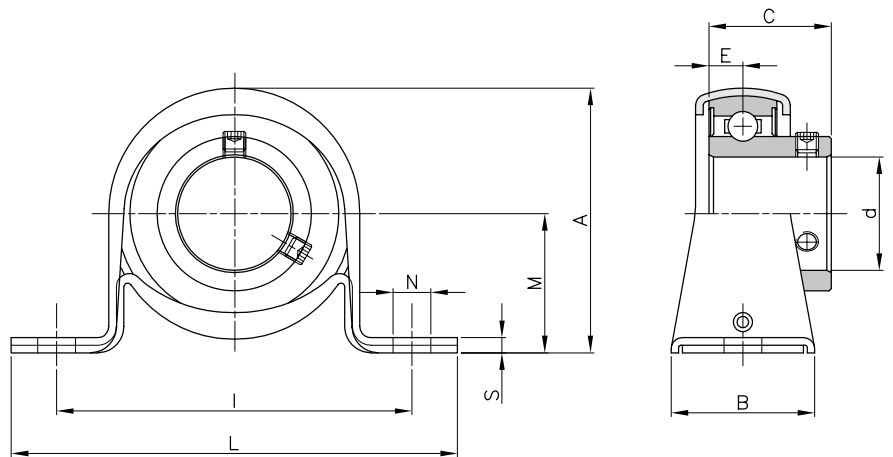
BALL FLANGE BEARING IN STEEL - ZINC PLATED

SUPPORTI IN LAMIERA "B-SBPFL"



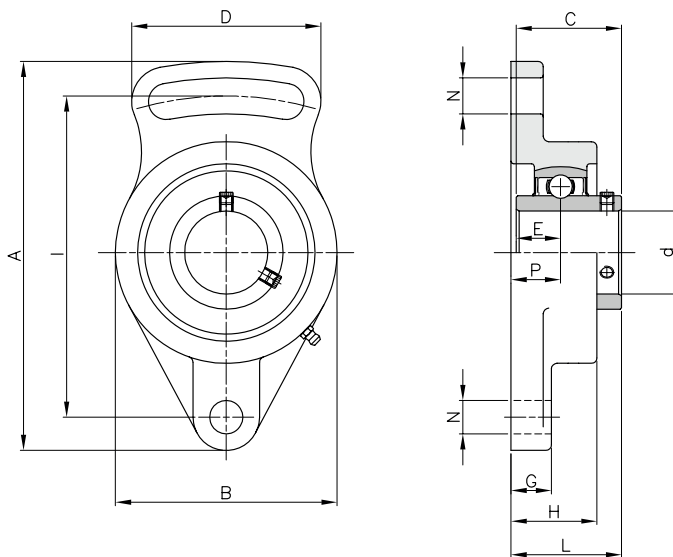
tipo	codice	d mm	dimensioni (mm)									Kg.
			A	I	L	F	R	N	S	C	E	
B-SBPFL201	BSBPFL201	12	81	63,5	59	49	7,0	7,1	2,0	22	6,0	0,23
B-SBPFL202	BSBPFL202	15	81	63,5	59	49	7,0	7,1	2,0	22	6,0	0,23
B-SBPFL203	BSBPFL203	17	81	63,5	59	49	7,0	7,1	2,0	22	6,0	0,23
B-SBPFL204	BSBPFL204	20	91	71,5	67	56	8,0	8,7	2,0	25	7,0	0,28
B-SBPFL205	BSBPFL205	25	96	76,0	71	60	9,0	8,7	2,0	27	7,5	0,28
B-SBPFL206	BSBPFL206	30	113	90,5	84	71	9,5	11,0	2,6	30	8,0	0,38
B-SBPFL207	BSBPFL207	35	123	100,0	94	81	11,0	11,0	2,6	32	8,5	0,54
B-SBPFL208	BSBPFL208	40	148	119,0	100	90	11,0	13,5	6,8	34	9,0	0,80

SUPPORTI IN LAMIERA "B-SBPP"



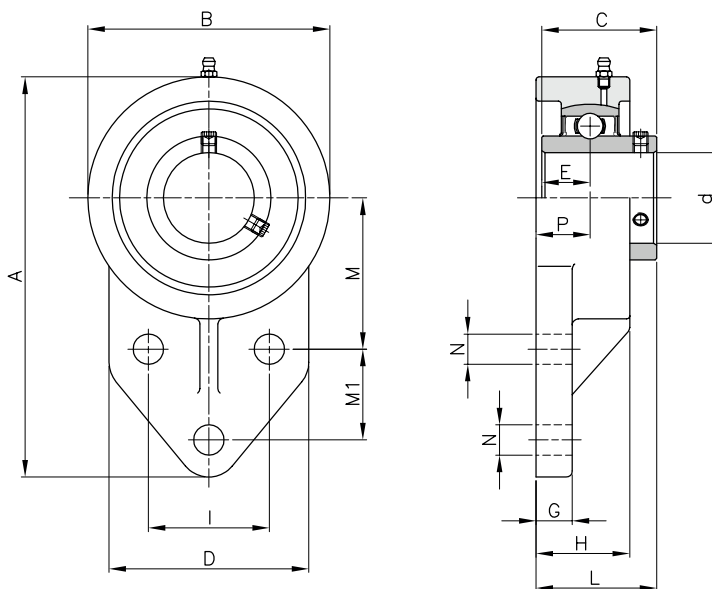
tipo	codice	d mm	dimensioni (mm)									Kg.
			L	I	A	B	M	N	S	C	E	
B-SBPP201	BSBPP201	12	86	68	43,8	25	22,2	9,5	3,2	22	6,0	0,16
B-SBPP202	BSBPP202	15	86	68	43,8	25	22,2	9,5	3,2	22	6,0	0,16
B-SBPP203	BSBPP203	17	86	68	43,8	25	22,2	9,5	3,2	22	6,0	0,16
B-SBPP204	BSBPP204	20	98	76	50,5	32	25,4	9,5	3,2	25	7,0	0,23
B-SBPP205	BSBPP205	25	108	86	56,6	32	28,6	11,5	4,0	27	7,5	0,28
B-SBPP206	BSBPP206	30	118	95	66,3	38	33,3	11,5	4,0	30	8,0	0,47
B-SBPP207	BSBPP207	35	129	106	78,0	42	39,7	11,5	4,6	32	8,5	0,57

SUPPORTI IN GHISA "B-UCFA"



tipo	codice	d mm	dimensioni (mm)											Kg.
			A	I	P	G	H	N	B	L	D	C	E	
B-UCFA204	BUCFA204	20	98	78	15	12	25,5	10	60	33,3	50	31,0	12,7	0,46
B-UCFA205	BUCFA205	25	124	98	16	14	27,0	13	70	36,8	65	34,1	14,3	0,66
B-UCFA206	BUCFA206	30	141	115	18	14	31,0	13	83	40,2	72	38,1	15,9	0,93
B-UCFA207	BUCFA207	35	155	128	19	16	34,0	15	96	44,4	82	42,9	17,5	1,46
B-UCFA208	BUCFA208	40	171	142	21	16	38,0	15	105	51,2	87	49,2	19,0	1,78
B-UCFA209	BUCFA209	45	179	146	22	18	40,0	17	111	52,2	90	49,2	19,0	2,03
B-UCFA210	BUCFA210	50	189	155	22	18	40,0	17	116	54,6	94	51,6	19,0	2,23

SUPPORTI IN GHISA "B-UCFB"



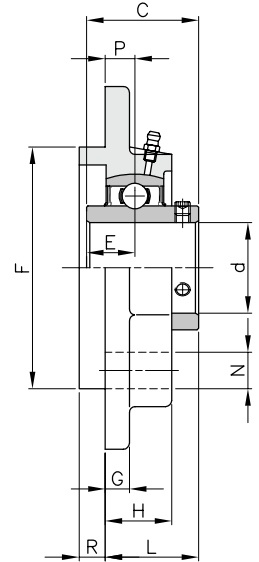
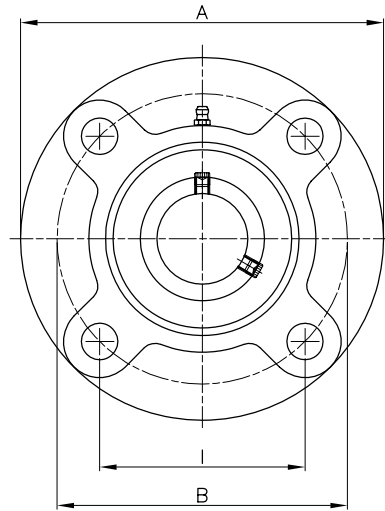
tipo	codice	d mm	dimensioni (mm)											Kg.		
			A	B	D	H	N	G	M	M1	I	P	L		C	E
B-UCFB204	BUCFB204	20	110	62	52	25,5	10	13	42	27	32	15	33,3	31,0	12,7	0,54
B-UCFB205	BUCFB205	25	116	68	56	27,0	10	13	45	27	34	16	35,8	34,1	14,3	0,79
B-UCFB206	BUCFB206	30	130	78	65	31,0	10	13	50	29	40	18	40,2	38,1	15,9	0,95
B-UCFB207	BUCFB207	35	144	90	70	34,0	10	15	55	32	46	19	44,4	42,9	17,5	1,29
B-UCFB208	BUCFB208	40	164	100	78	36,0	12	16	60	41	50	21	51,2	49,2	19,0	1,78
B-UCFB209	BUCFB209	45	174	106	80	38,0	12	18	65	43	54	22	52,2	49,2	19,0	1,91
B-UCFB210	BUCFB210	50	184	112	86	40,0	12	18	68	46	58	22	54,6	51,6	19,0	2,36



SUPPORTI PER CUSCINETTI IN GHISA

BALL FLANGE BEARING IN CAST IRON

SUPPORTI IN GHISA "B-UCFC"



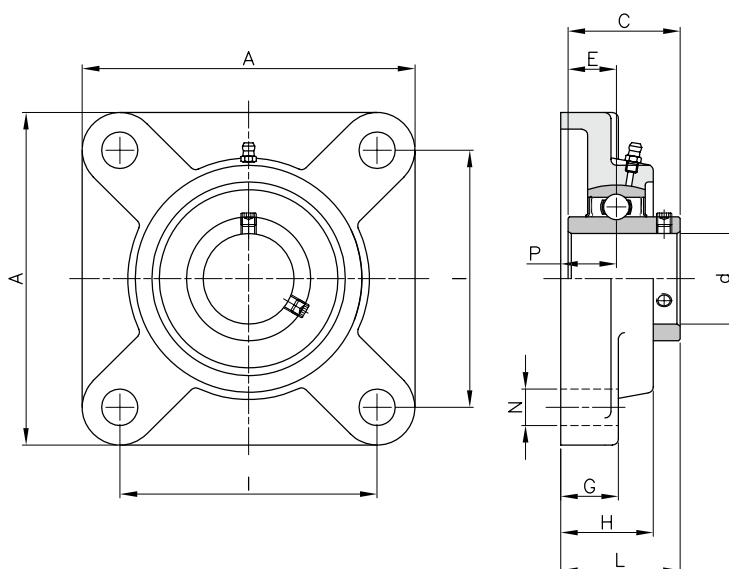
tipo	codice	d mm	dimensioni (mm)												Kg.
			A	B	I	P	N	R	G	H	F	L	C	E	
B-UCFC204	BUCFC204	20	100	78	55,1	10	12	5	7	20,5	62	28,3	31,0	12,7	0,69
B-UCFC205	BUCFC205	25	115	90	63,6	10	12	6	7	21,0	70	29,8	34,1	14,3	1,00
B-UCFC206	BUCFC206	30	125	100	70,7	10	12	8	8	23,0	80	32,2	38,1	15,9	1,30
B-UCFC207	BUCFC207	35	136	110	77,8	11	14	8	9	26,0	90	36,4	42,9	17,5	1,81
B-UCFC208	BUCFC208	40	145	120	84,8	11	14	10	9	26,0	100	41,2	49,2	19,0	2,14
B-UCFC209	BUCFC209	45	160	132	93,3	12	16	12	14	26,0	105	40,2	49,2	19,0	2,68
B-UCFC210	BUCFC210	50	165	138	97,6	12	16	12	14	28,0	110	42,6	51,6	19,0	2,90
B-UCFC211	BUCFC211	55	185	150	106,1	13	19	12	15	31,0	125	46,4	55,6	22,2	4,01
B-UCFC212	BUCFC212	60	195	160	113,1	15	19	12	15	36,0	135	56,7	65,1	25,4	4,94
B-UCFC213	BUCFC213	65	205	170	120,2	16	19	14	15	36,0	145	55,7	65,1	25,4	5,65
B-UCFC214	BUCFC214	70	215	177	125,1	17	19	14	18	40,0	150	61,4	74,6	30,2	6,95
B-UCFC215	BUCFC215	75	220	184	130,1	18	19	16	18	40,0	160	62,5	77,8	30,3	7,56
B-UCFC216	BUCFC216	80	240	200	141,0	18	23	16	18	42,0	170	67,3	82,6	33,3	9,15



SUPPORTI PER CUSCINETTI IN GHISA

BALL FLANGE BEARING IN CAST IRON

SUPPORTI IN GHISA "B-UCF"



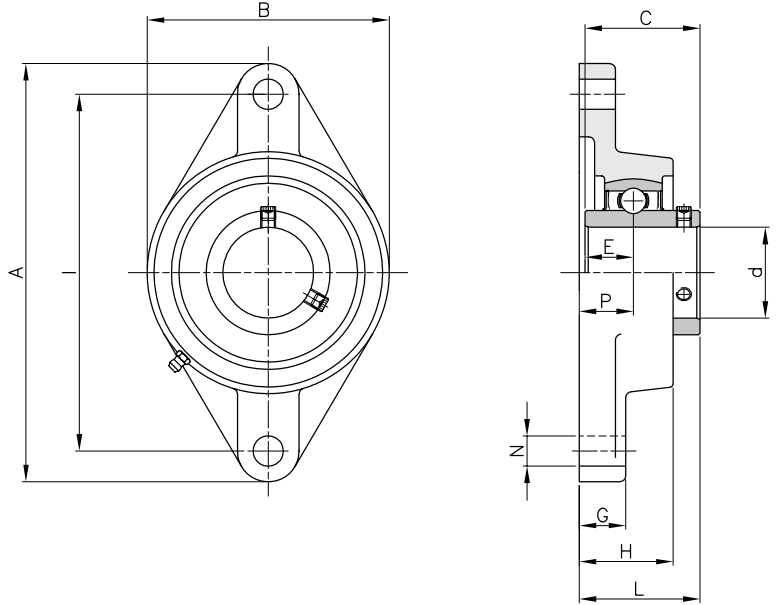
tipo	codice	d mm	dimensioni (mm)									Kg.
			A	I	P	G	H	N	L	C	E	
B-UCF202	BUCF202	15	86	64	15	11	25,4	12	33,3	31,0	12,7	0,59
B-UCF203	BUCF203	17	86	64	15	11	25,4	12	33,3	31,0	12,7	0,59
B-UCF204	BUCF204	20	86	64	15	11	25,4	12	33,3	31,0	12,7	0,62
B-UCF205	BUCF205	25	95	70	16	13	27,0	12	35,7	34,0	14,3	0,83
B-UCF206	BUCF206	30	108	83	18	13	31,0	12	40,2	38,1	15,9	1,10
B-UCF207	BUCF207	35	117	92	19	15	34,0	14	44,4	42,9	17,5	1,50
B-UCF208	BUCF208	40	130	102	21	15	36,0	16	51,2	49,2	19,0	1,90
B-UCF209	BUCF209	45	137	105	22	16	38,0	16	52,2	49,2	19,0	2,20
B-UCF210	BUCF210	50	143	111	22	16	40,0	16	54,6	51,6	22,2	2,50
B-UCF211	BUCF211	55	162	130	25	18	43,0	19	58,4	55,6	25,4	3,40
B-UCF212	BUCF212	60	175	143	29	22	48,0	19	68,7	65,1	25,4	4,20
B-UCF213	BUCF213	65	187	149	30	22	50,0	19	69,7	65,1	30,2	5,20
B-UCF214	BUCF214	70	193	152	31	22	54,0	19	75,4	74,6	33,3	5,90
B-UCF215	BUCF215	75	200	159	34	22	56,0	19	78,5	77,8	33,3	6,40
B-UCF216	BUCF216	80	208	165	34	22	58,0	23	83,3	82,6	33,3	7,30
B-UCF217	BUCF217	85	220	175	36	24	63,0	23	87,6	85,7	34,1	8,90



SUPPORTI PER CUSCINETTI IN GHISA

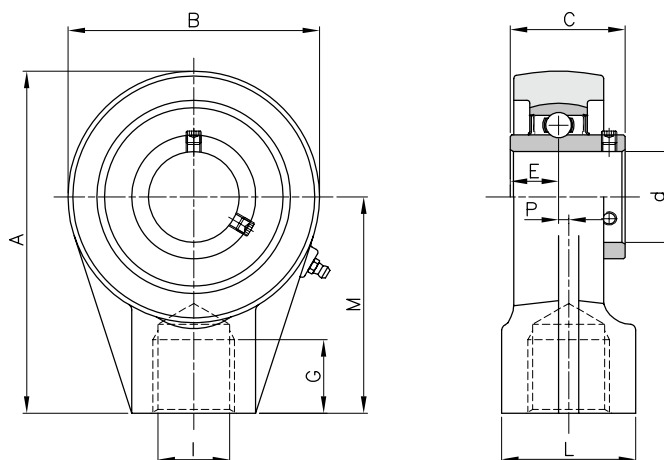
BALL FLANGE BEARING IN CAST IRON

SUPPORTI IN GHISA "B-UCFL"



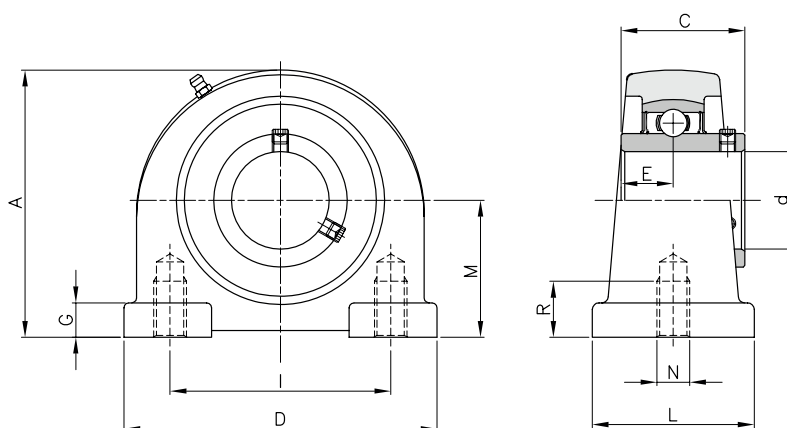
tipo	codice	d mm	dimensioni (mm)										Kg.
			A	I	P	G	H	N	B	L	C	E	
B-UCFL202	BUCFL202	15	113	90	15	11	25,5	12	60	33,3	31,0	12,7	0,44
B-UCFL203	BUCFL203	17	113	90	15	11	25,5	12	60	33,3	31,0	12,7	0,43
B-UCFL204	BUCFL204	20	113	90	15	11	25,5	12	60	33,3	31,0	12,7	0,43
B-UCFL205	BUCFL205	25	130	99	16	13	27,0	16	68	35,8	34,1	14,3	0,58
B-UCFL206	BUCFL206	30	148	117	18	13	31,0	16	80	40,2	38,1	15,9	0,86
B-UCFL207	BUCFL207	35	161	130	19	14	34,0	16	90	44,4	42,9	17,5	1,08
B-UCFL208	BUCFL208	40	175	144	21	14	36,0	16	100	51,2	49,2	19,0	1,44
B-UCFL209	BUCFL209	45	188	148	22	15	38,0	19	108	52,2	49,2	19,0	1,74
B-UCFL210	BUCFL210	50	197	157	22	15	40,0	19	115	54,6	51,6	19,0	2,10
B-UCFL211	BUCFL211	55	224	184	25	18	43,0	19	130	58,4	55,6	22,2	2,91
B-UCFL212	BUCFL212	60	250	202	29	18	48,0	23	140	68,7	65,1	25,4	3,74
B-UCFL213	BUCFL213	65	258	210	30	22	50,0	23	155	69,7	65,1	25,4	4,57
B-UCFL214	BUCFL214	70	265	216	31	22	54,0	23	160	75,4	74,6	30,2	5,11

SUPPORTI IN GHISA "B-UCHA"



tipo	codice	d mm	dimensioni (mm)									Kg.
			B	A	P	M	L	G	I	C	E	
B-UCHA204	BUCHA204	20	64	96		64	40	19	3/4"	31,0	12,7	0,73
B-UCHA205	BUCHA205	25	78	103		64	40	19	3/4"	34,1	14,3	0,83
B-UCHA206	BUCHA206	30	78	103		64	40	19	3/4"	38,1	15,9	0,83
B-UCHA207	BUCHA207	35	92	116		70	40	19	3/4"	42,9	17,5	1,16
B-UCHA208	BUCHA208	40	96	121	2	73	40	19	3/4"	49,2	19,0	1,32
B-UCHA209	BUCHA209	45	108	136	5	82	48	21	1"	49,2	19,0	1,72
B-UCHA210	BUCHA210	50	118	142	5	83	48	21	1"	51,6	19,0	1,90

SUPPORTI IN GHISA "B-UCPA"



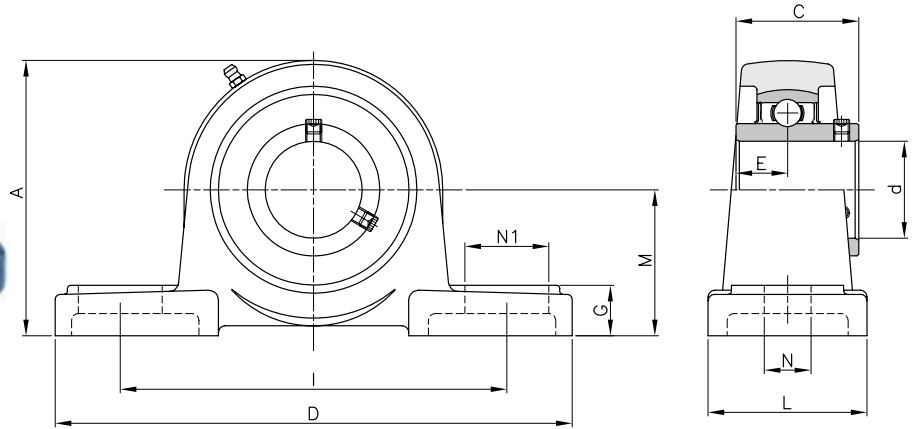
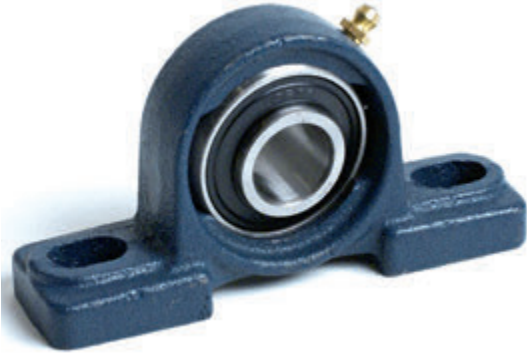
tipo	codice	d mm	dimensioni (mm)										Kg.
			M	D	I	L	N	G	A	R	C	E	
B-UCPA204	BUCPA204	20	30,2	76	52	40	M10	11	62	13	31,0	12,7	0,60
B-UCPA205	BUCPA205	25	36,5	84	56	38	M10	12	72	13	34,1	14,3	0,83
B-UCPA206	BUCPA206	30	42,9	94	66	50	M14	12	84	18	38,1	15,9	1,12
B-UCPA207	BUCPA207	35	47,6	110	80	55	M14	13	95	20	42,9	17,5	1,48
B-UCPA208	BUCPA208	40	49,2	116	84	58	M14	13	100	20	49,2	19,0	1,89
B-UCPA209	BUCPA209	45	54,2	120	90	60	M14	13	108	25	49,2	19,0	1,98
B-UCPA210	BUCPA210	50	57,2	130	94	64	M16	14	116	25	51,6	19,0	2,16



SUPPORTI PER CUSCINETTI IN GHISA

BALL PILLOW BLOCK BEARING IN CAST IRON

SUPPORTI IN GHISA "B-UCP"



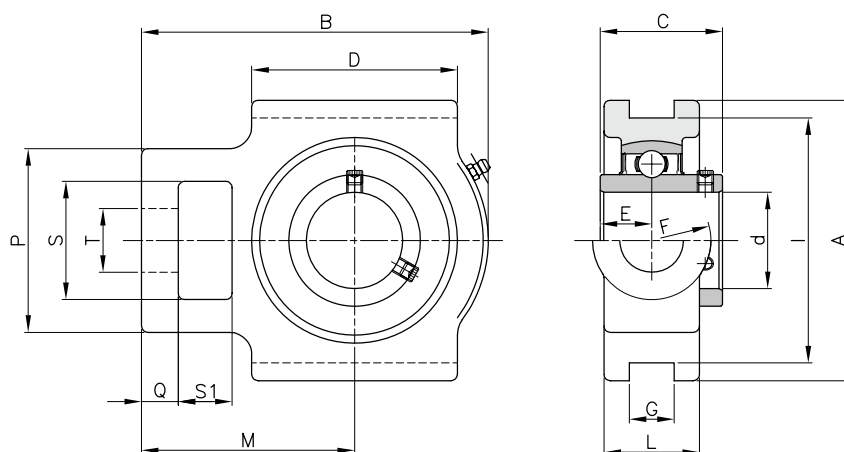
tipo	codice	d mm	dimensioni (mm)										Kg.
			M	D	I	L	N1	N	G	A	C	E	
B-UCP201	BUCP201	12	33,3	127	95	38	19	13	14	65	31,0	12,7	0,69
B-UCP202	BUCP202	15	33,3	127	95	38	19	13	14	65	31,0	12,7	0,67
B-UCP203	BUCP203	17	33,3	127	95	38	19	13	14	65	31,0	12,7	0,67
B-UCP204	BUCP204	20	33,3	127	95	38	19	13	14	65	31,0	12,7	0,66
B-UCP205	BUCP205	25	36,5	140	105	38	19	13	15	71	34,1	14,3	0,81
B-UCP206	BUCP206	30	42,9	165	121	46	20	17	17	84	36,1	15,9	1,24
B-UCP207	BUCP207	35	47,6	167	127	48	20	17	18	93	42,9	17,5	1,58
B-UCP208	BUCP208	40	49,2	184	137	54	20	17	18	100	49,2	19,0	1,89
B-UCP209	BUCP209	45	54,0	190	146	54	20	17	20	106	49,2	19,0	2,14
B-UCP210	BUCP210	50	57,2	206	159	60	23	20	21	113	51,6	19,0	2,66
B-UCP211	BUCP211	55	63,5	219	171	60	23	20	23	125	55,6	22,2	3,31
B-UCP212	BUCP212	60	69,8	241	184	70	23	20	25	138	65,1	25,4	4,90
B-UCP213	BUCP213	65	76,2	265	203	70	28	25	27	150	65,1	25,4	5,15
B-UCP214	BUCP214	70	79,4	266	210	72	28	25	27	156	74,6	30,2	6,20
B-UCP215	BUCP215	75	82,6	275	217	74	28	25	28	162	77,8	33,3	7,16
B-UCP216	BUCP216	80	88,9	292	232	78	28	25	30	174	82,6	33,3	8,10



SUPPORTI PER CUSCINETTI IN GHISA

BALL PILLOW BLOCK BEARING IN CAST IRON

SUPPORTI IN GHISA "B-UCT"

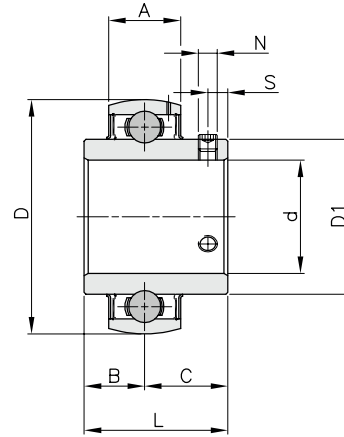


tipo	codice	d mm	dimensioni (mm)															Kg.
			S1	Q	S	F	P	T	D	G	I	A	B	L	M	C	E	
B-UCT204	BUCT204	20	16	10	32	32	51	19	51	12	76	89	94	24	61	31,0	12,7	0,76
B-UCT205	BUCT205	25	16	10	32	32	51	19	51	12	76	89	97	24	62	34,1	14,3	0,81
B-UCT206	BUCT206	30	16	10	37	37	56	22	57	12	89	102	113	28	70	38,1	15,9	1,22
B-UCT207	BUCT207	35	16	13	37	37	64	22	64	12	89	102	129	30	78	42,9	17,5	1,44
B-UCT208	BUCT208	40	19	16	49	49	83	29	83	16	102	114	144	35	83	49,2	19,0	2,40
B-UCT209	BUCT209	45	19	16	49	49	83	29	83	16	102	117	144	35	87	49,2	19,0	2,36
B-UCT210	BUCT210	50	19	16	49	49	83	29	86	16	102	117	149	35	90	51,6	19,0	2,43
B-UCT211	BUCT211	55	25	19	64	64	102	35	95	22	130	146	171	38	106	55,6	22,2	4,11
B-UCT212	BUCT212	60	32	19	64	64	102	35	102	22	130	146	194	42	119	65,1	25,4	4,97
B-UCT213	BUCT213	65	32	21	70	70	111	41	121	26	151	167	224	44	137	65,1	25,4	6,65
B-UCT214	BUCT214	70	32	21	70	70	111	41	121	26	151	167	224	46	137	74,6	30,2	7,05
B-UCT215	BUCT215	75	32	21	70	70	111	41	121	26	151	167	232	48	140	77,8	33,3	7,41



CUSCINETTI INOX PER SUPPORTI BALL BEARING IN STAINLESS STEEL

CUSCINETTI INOX "B-UC" PER SUPPORTI



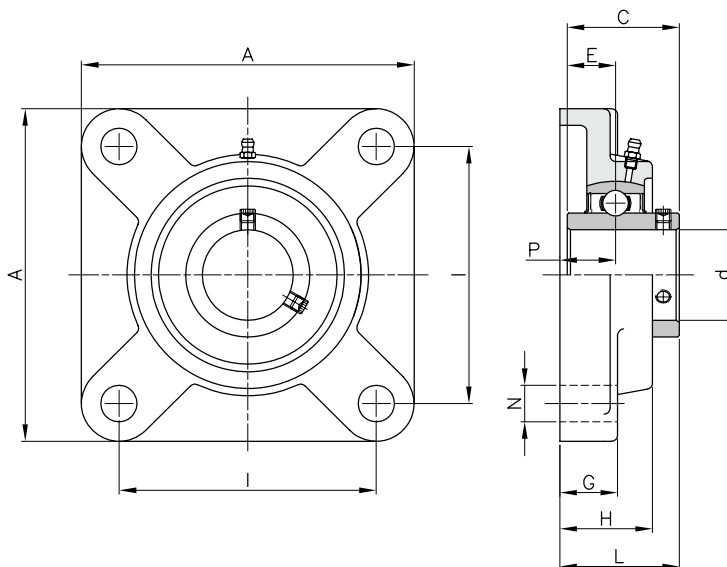
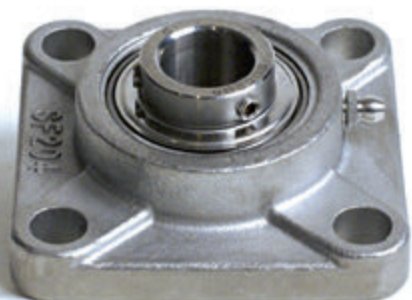
tipo	codice	d mm	dimensioni (mm)								carico KN		Kg.
			D	D1	L	A	B	C	S	N	dinamico C	statico C ₀	
B-UC204	SSBUC204	20	47	29,0	31,0	17	12,7	18,3	4,5	M6 x 1	9880	6200	0,16
B-UC205	SSBUC205	25	52	34,0	34,0	17	14,3	19,7	5,0	M6 x 1	10780	6980	0,20
B-UC206	SSBUC206	30	62	40,5	38,1	19	15,9	22,2	5,0	M6 x 1	14970	10040	0,32
B-UC207	SSBUC207	35	72	48,0	42,9	20	17,5	25,4	6,0	M8 x 1	19750	13670	0,48
B-UC208	SSBUC208	40	80	53,0	49,2	21	19,0	30,2	8,0	M8 x 1	22710	15940	0,65
B-UC209	SSBUC209	45	85	57,3	49,2	22	19,0	30,2	8,0	M8 x 1	24360	17710	0,70
B-UC210	SSBUC210	50	90	63,0	51,6	23	19,0	32,6	9,0	M10 x 1	26980	19840	0,79



SUPPORTI PER CUSCINETTI IN ACCIAIO INOX

BALL FLANGE BEARING IN STAINLESS STEEL

SUPPORTI IN ACCIAIO INOX "B-UCF"

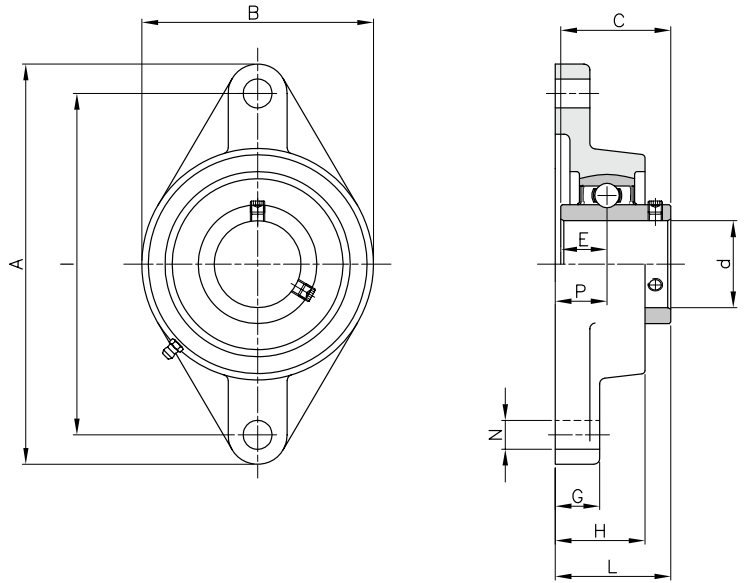


tipo	codice	d mm	dimensioni (mm)									cuscinetto			Kg.
			A	I	P	G	H	N	L	C	E	codice	carico KN		
												dinamico C	statico C ₀		
B-UCF201	SSBUCF201	12	86	64	15	12	25,5	12	33,3	31,0	12,7	SSBUC201	9880	6200	0,64
B-UCF202	SSBUCF202	15	86	64	15	12	25,5	12	33,3	31,0	12,7	SSBUC202	9880	6200	0,63
B-UCF203	SSBUCF203	17	86	64	15	12	25,5	12	33,3	31,0	12,7	SSBUC203	9880	6200	0,61
B-UCF204	SSBUCF204	20	86	64	15	12	25,5	12	33,3	31,0	12,7	SSBUC204	9880	6200	0,59
B-UCF205	SSBUCF205	25	95	70	16	14	27,0	12	35,7	34,0	14,3	SSBUC205	10780	6980	0,82
B-UCF206	SSBUCF206	30	108	83	18	14	31,0	12	40,2	38,1	15,9	SSBUC206	14970	10040	1,10
B-UCF207	SSBUCF207	35	117	92	19	16	34,0	14	44,4	42,9	17,5	SSBUC207	19750	13670	1,50
B-UCF208	SSBUCF208	40	130	102	21	16	36,0	16	51,2	49,2	19,0	SSBUC208	22710	15940	1,90
B-UCF209	SSBUCF209	45	137	105	22	18	38,0	16	52,2	49,2	19,0	SSBUC209	24360	17710	2,30
B-UCF210	SSBUCF210	50	143	111	22	18	40,0	16	54,6	51,6	19,0	SSBUC210	26980	19840	2,50



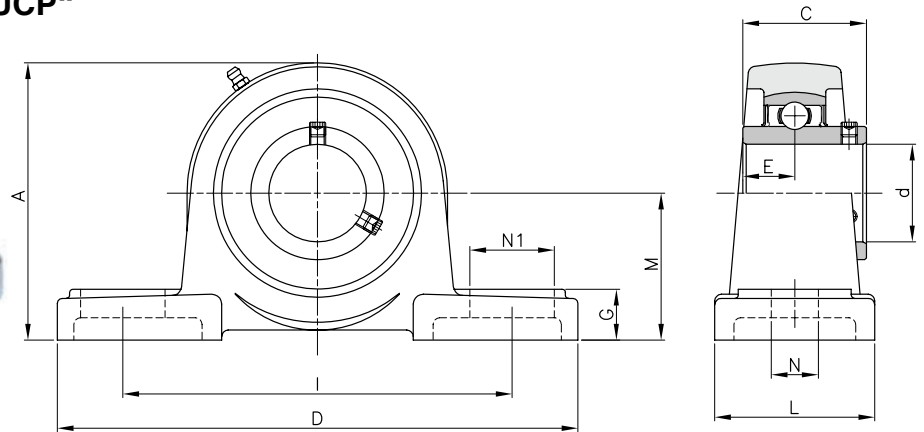
SUPPORTI PER CUSCINETTI IN ACCIAIO INOX BALL FLANGE BEARING IN STAINLESS STEEL

SUPPORTI IN ACCIAIO INOX "B-UCFL"



tipo	codice	d mm	dimensioni (mm)										cuscinetto		Kg.
			A	I	G	P	H	N	B	L	C	E	codice	carico KN dinamico C statico C ₀	
B-UCFL204	SSBUCFL204	20	113	90	10	15	25,5	12	60	33,3	31,0	12,7	SSBUC204	9880 6200	0,49
B-UCFL205	SSBUCFL205	25	130	99	10	16	27,0	16	68	35,7	34,0	14,3	SSBUC205	10780 6980	0,63
B-UCFL206	SSBUCFL206	30	148	117	10	18	31,0	16	80	40,2	38,1	15,9	SSBUC206	14970 10040	0,94
B-UCFL207	SSBUCFL207	35	161	130	11	19	34,0	16	90	44,4	42,9	17,5	SSBUC207	19750 13670	1,20
B-UCFL208	SSBUCFL208	40	175	144	11	21	36,0	16	100	51,2	49,2	19,0	SSBUC208	22710 15940	1,60
B-UCFL209	SSBUCFL209	45	188	148	13	22	38,0	19	108	52,2	49,2	19,0	SSBUC209	24360 17710	1,90
B-UCFL210	SSBUCFL210	50	197	157	13	22	40,0	19	115	54,6	51,6	19,0	SSBUC210	26980 19840	2,20

SUPPORTI IN ACCIAIO INOX "B-UCP"



tipo	codice	d mm	dimensioni (mm)										cuscinetto		Kg.
			M	D	I	G	N	N1	A	L	C	E	codice	carico KN dinamico C statico C ₀	
B-UCP204	SSBUCP204	20	33,3	127	95	15	13	19	65	38	31,0	12,7	SSBUC204	9880 6200	0,65
B-UCP205	SSBUCP205	25	36,5	140	105	16	13	16	70	38	34,0	14,3	SSBUC205	10780 6980	0,79
B-UCP206	SSBUCP206	30	42,9	165	121	18	17	21	83	48	38,1	15,9	SSBUC206	14970 10040	1,30
B-UCP207	SSBUCP207	35	47,6	167	127	19	17	21	94	48	42,9	17,5	SSBUC207	19750 13670	1,60
B-UCP208	SSBUCP208	40	49,2	184	137	19	17	25	100	54	49,2	19,0	SSBUC208	22710 15940	2,00
B-UCP209	SSBUCP209	45	54,0	190	146	20	17	22	108	54	49,2	19,0	SSBUC209	24360 17710	2,20
B-UCP210	SSBUCP210	50	57,2	206	159	22	20	25	114	60	51,6	19,0	SSBUC210	26980 19840	2,80